

ERBB2(V777A)

Catalog Number: 26080

Gene Symbol: ERBB2/HER2/Neu

Description: Anti-ERBB2(V777A) Mouse Monoclonal Antibody

Background: The ErbB family is composed of four plasma membrane-bound receptor tyrosine kinases. Amplification or over-expression of the ERBB2 gene occurs in approximately 30% of breast cancers. HER2 is encoded by ERBB2, a known proto-oncogene located at the long arm of human chromosome 17(17q21-q22). HER2 proteins have been shown to form clusters in cell membranes that may play a role in tumorigenesis. Mutations of ErbB2 protein, including V777A, have been indicated in human cancers.

Immunogen: A synthetic peptide surrounding the 777A codon of ErbB2 protein.

Tested Applications: ELISA, WB, IF, IHC

Recommended Dilutions:

ELISA:	1:500-1:5000
WB:	1:200-1:2000
IF:	1:50-1:100
IHC:	1:50-1:100

Concentration: 0.2 mg/ml

Host: Mouse

Clonality: Monoclonal

Isotype: IgG

Purity: Purified from ascites

Format: Liquid

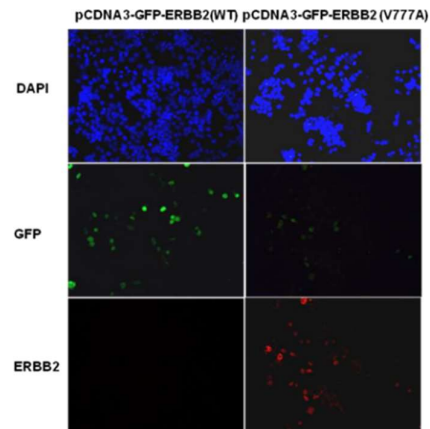
Preservative: No

Constituents: PBS (without Mg²⁺ and Ca²⁺), pH7.4, 150 mM NaCl, 50% glycerol

Species Reactivity: Recognizes ERBB2(V777A), but not wild type ERBB2 protein from vertebrates.

Storage Conditions: Store at -20°C. Avoid freeze / thaw cycles.

Immunofluorescence:



Immunofluorescence of cells expressing ErbB2 proteins with anti-ErbB2(V777A) antibody.

HEK293T cells were transfected with pCDNA3-GFP-ErbB2 WT plasmid (left column) or pCDNA3-GFP-ErbB2 (V777A) plasmid (right column), then fixed and stained with anti-ErbB2 (V777A) monoclonal antibody (Cat. # 26080).

FOR RESEARCH USE ONLY. NOT FOR DIAGNOSTIC APPLICATIONS